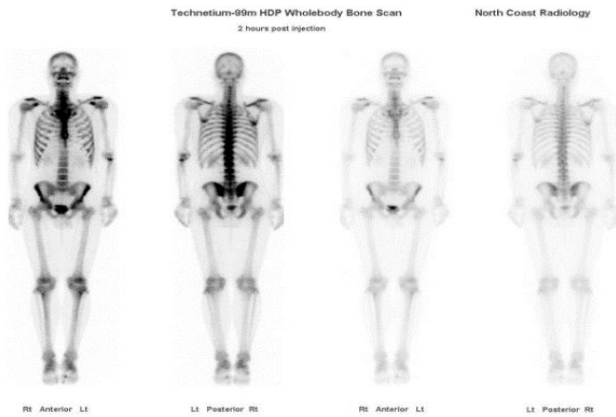


## BONE SCAN



### Clinical Indications:

- Cancer of the bone or metastasis
- Bone inflammation and fractures,
- Bone infection/avascularity,
- Metabolic bone disease such as Paget's disease
- Disc degeneration, facet arthritis and crush fractures old versus new.

### Benefits of a Bone Scan :

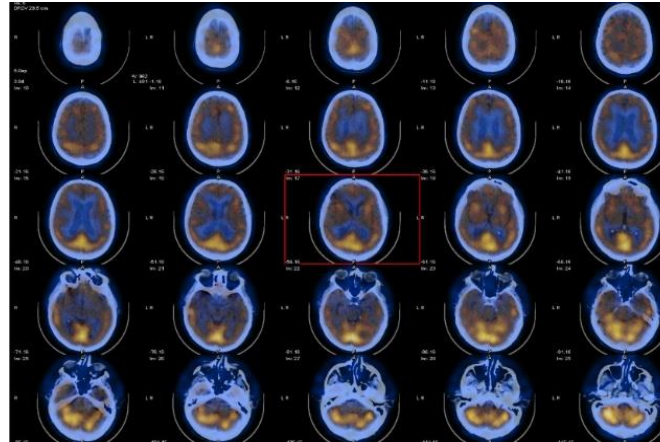
- No patient preparation
- Bone Scans may be able to achieve earlier management for the patient, due to early detection through the rapid osteoblastic healing response, whereas features of a fracture may take several days to weeks to evolve on X-ray.
- Whole skeleton can be assessed
- Further clinical information can be obtained with the combination of SPECT and low dose CT, which provides a fused SPECT/CT image and enables co-registration of abnormal bone scan activity with skeletal anatomy.

### Contraindications:

- Pregnancy

**NCR Billing Policy: Bulk Billed**

## CEREBRAL PERFUSION SCAN



### Clinical Indications:

- Differential diagnosis of suspected dementia in patients presenting with cognitive impairment.

### Benefits of a Cerebral Perfusion:

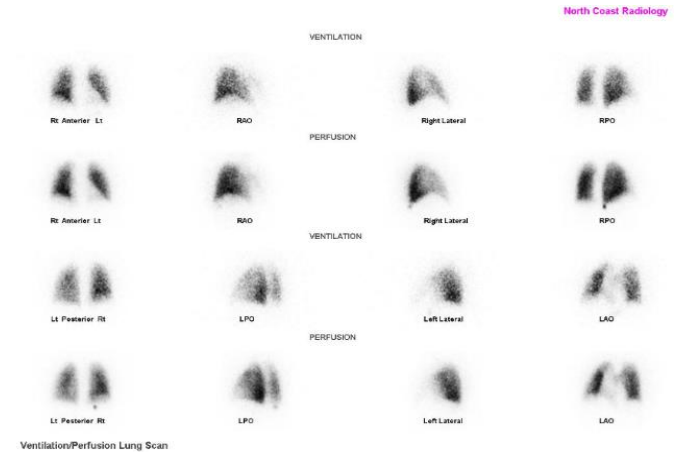
- Looks at brain function by demonstrating the amount of blood taken up by the brain cells.
- The cerebral perfusion scan can assist in providing information about different types of dementia and can therefore assist in providing optimal patient care and management.
- A low dose, non-contrast computed tomography (CT) is acquired in conjunction with the SPECT study to produce a fused SPECT/CT image that permits precise co-registration of regional cerebral blood flow with regional cerebral anatomy.

### Contraindications:

- Pregnancy

**NCR Billing Policy: Bulk Billed**

## VENTILATION AND PERFUSION SCAN



### Clinical Indications:

- Diagnose PE
- Diagnose recurrence of PE
- Predict quantitative lung function

### Benefits of a Ventilation and Perfusion Lung Scan:

- Significantly less radiation dose than CTPA
- Preferred option to CTPA in patients that have a contrast allergy or impaired renal disease and are unable to have a iodine contrast injection.

**NOTE: A chest x-ray (no older than 24 hours) is required for interpretation of the lung scan.**

**NCR Billing Policy: Bulk Billed**